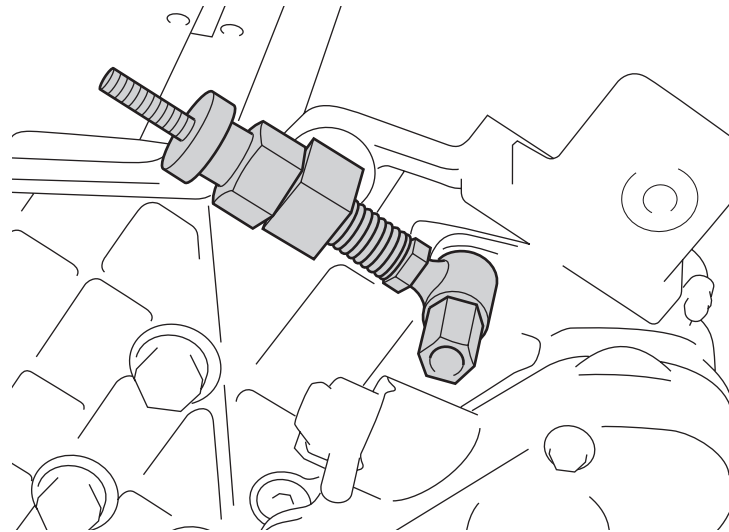


BARONESS[®]

Greens Mowers LM56/LM66/LM18G Series Installation Manual No.01 Assembly and Installation of Front Attachment Adjustment Parts.



Kyoeisha USA Inc.
www.baroness.us

Please use the following safety precautions when servicing a Baroness mower:

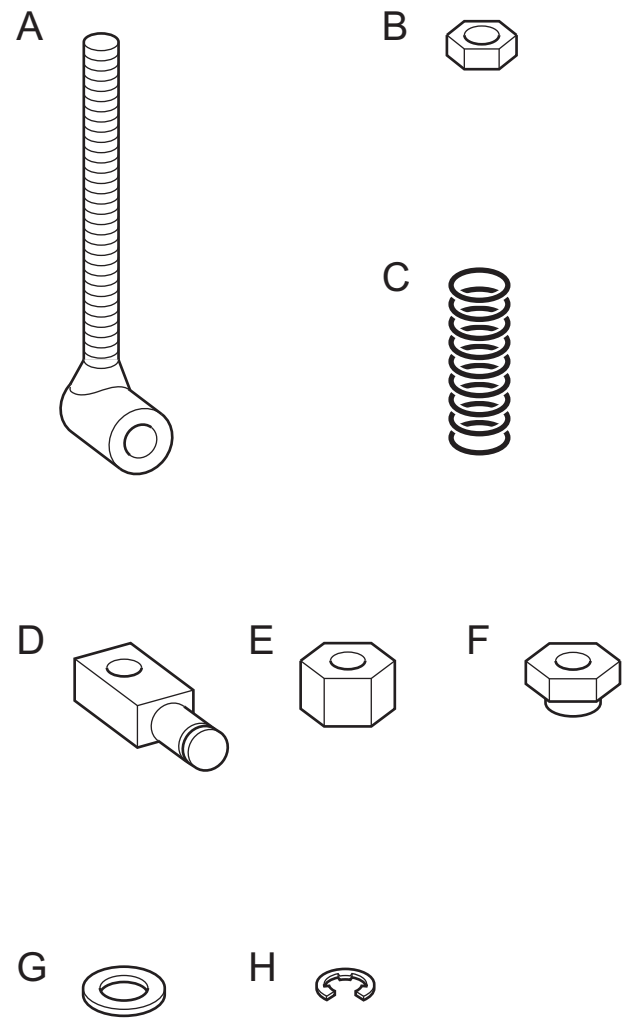
Wear protective clothing and gear.

- Long pants, safety glasses, hard hat, gloves, and steel toe shoes or boots are recommended before doing any work on the greens mower. This will reduce your risk of injury.

Notes for installation.

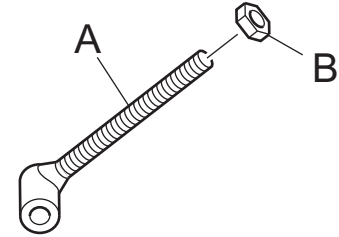
- Always refer to this installation manual or the owner's manual before beginning any work on the greens mower.
- Be sure to wear protective clothing and gear.
- "Left" and "right" directions in this manual are based on the viewpoint of the operator holding the handle of the mower and facing the mowing direction.
- Before doing any work on the mower, place it on a level surface and make sure all the switches are turned to the OFF position and that all the valves are closed.
- Engage parking brake and block tires while servicing the mower.
- Never attempt to install any parts or make any adjustments while the engine is running.
- Let the engine, muffler, and exhaust system cool before proceeding to service any parts which are in close proximity. These areas can be dangerously hot. Contact with these parts can cause bodily harm and or burns.
- Be mindful and take precaution around of the reel and blades as they contain sharp edges. These can inflict bodily harm and or injury.
- Always keep the safety symbols and instructions clean and attached to the mower. If they are lost or damaged, replace them immediately with new ones.
- Do not alter the machine. When replacing parts and grease, use only those specified by Kyoisha USA.
- The operation of a machine that has been modified or installed with parts other than those specified by Kyoisha USA could lead to mechanical malfunction resulting in damage to the mower and or injury to the operator.

Part	Part Num.	Part Name	Qty
A.	LM56G--1218Z2	Adjusting Screw108	2
B.	K0100080002	8 Nut	2
C.	K1000000238	1.4 Compression Spring 13.432	2
D.	LM56G--1217Z2	Adjusting Bush	2
E.	LM56G--1215Z2	8 Special Nut A	2
F.	LM56G--1216Z2	8 Special Nut B	2
G.	K5011013222	1SPCC Washer 1322	2
H.	K0400010002	Stop Ring E10	2

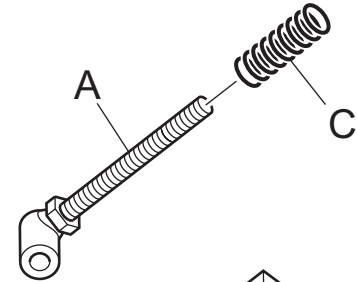


Step 1.

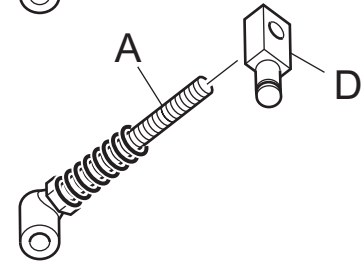
Take Part (A) and then screw Part (B) onto the thread, ensuring that the round side of the nuts goes on first.

**Step 2.**

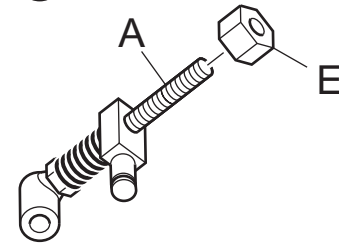
Take Part (C) and slide it over the thread on Part (A).

**Step 3.**

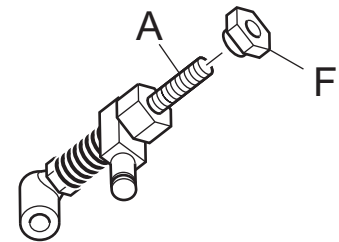
Take Part (D) and slide it over the thread on Part (A).

**Step 4.**

Take Part (E) and thread it onto the threaded end of Part (A).

**Step 5.**

Take Part (F) and thread it onto Part (A) ensuring that the thinner round end goes on first.



Step 6.

Take assembled adjustment assembly and put grease or anti-seize to round shaft end of Part (D).

Step 7.

Repeat steps 1 through 6 so that you have 2 assembled front attachment adjustment arms.

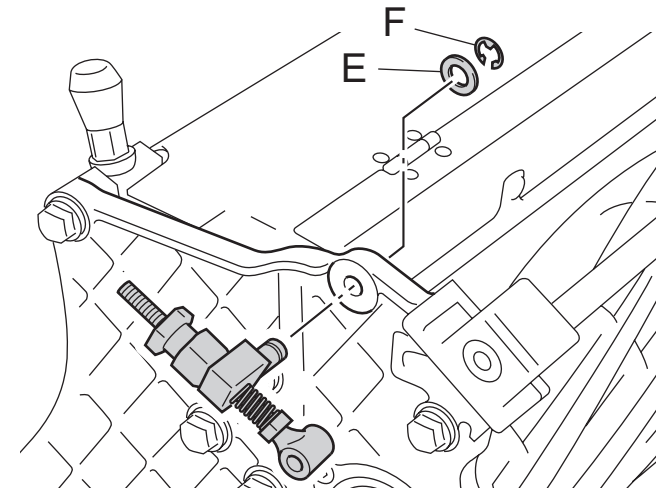
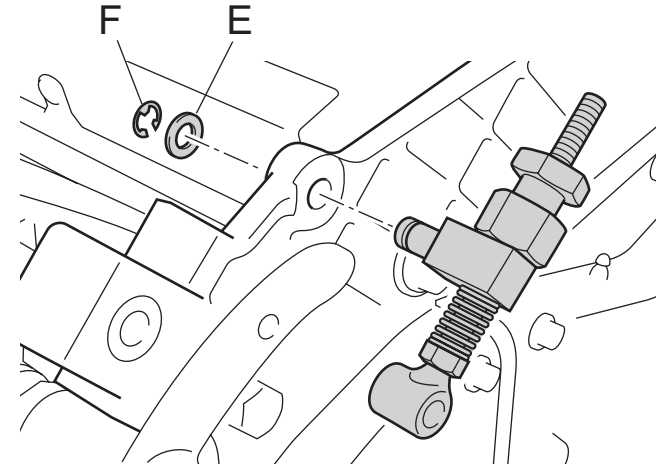
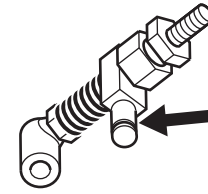
Step 8.

Take one front attachment adjustment arm and fit into allocated hole on the left frame housing, then slide Part (E) over the protruding portion of the shaft. Fasten into place with Part (F).

** For steps 8 and 9 make sure round side of Part (E) is facing the frame.

Step 9.

Fit remaining front attachment arm assembly into allocated hole on the right frame housing. Then slide Part (E) over the protruding portion of the shaft, fasten into place with Part (F)



BARONESS[®]

Kyoeisha USA, Inc.
1301 Rand Street, Suite D • Petaluma, CA 94954
Phone: 707.283.0610 • Fax: 707.283.0613
Web: www.baroness.us